

**New Mexico Electric Cooperatives
(Central Valley Electric Cooperative, Farmers' Electric Cooperative, Lea County
Electric Cooperative and Roosevelt County Electric Cooperative)**

Request for Proposals



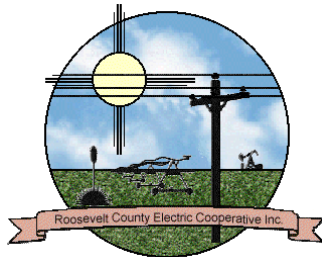
**CENTRAL VALLEY ELECTRIC
COOPERATIVE, INC.**



Farmers' Electric Cooperative, Inc. of New Mexico



**Roosevelt County
Electric Cooperative, Inc.**
"Owned By Those We Serve"

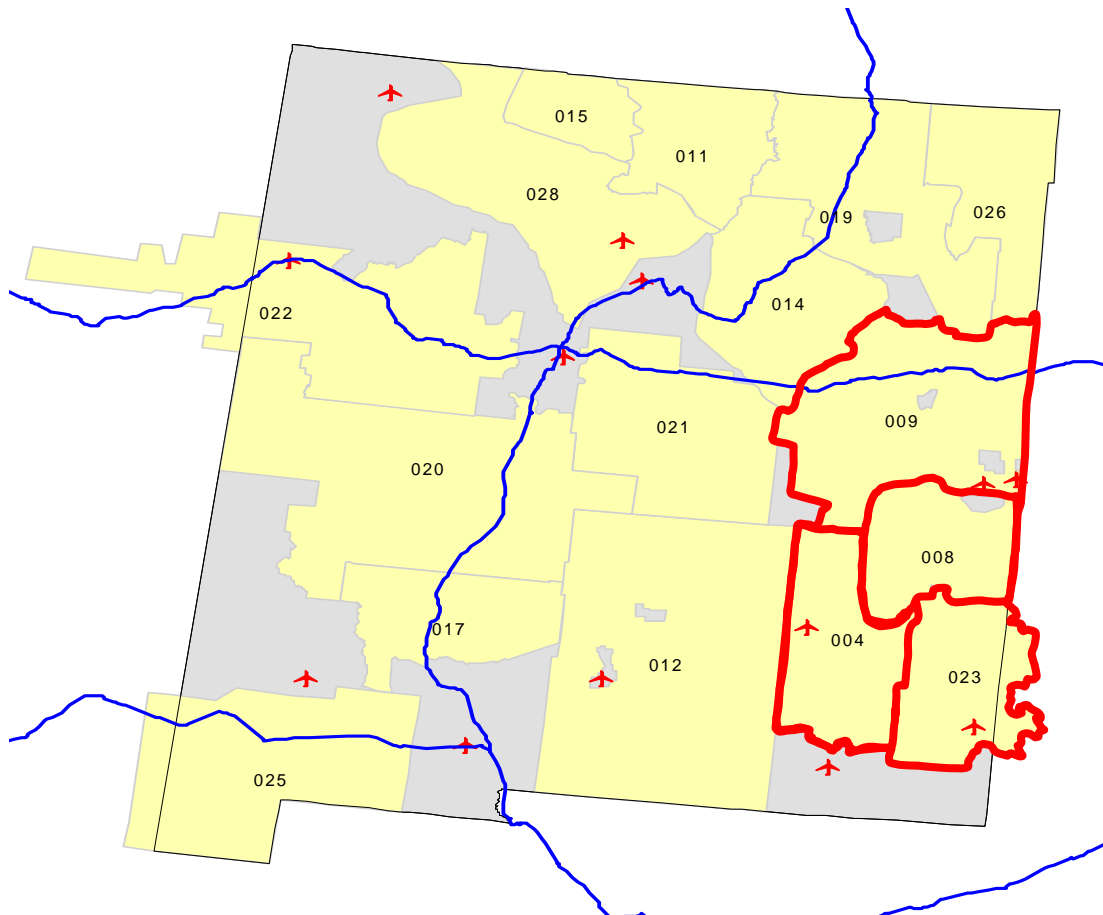


New Mexico Cooperatives Background:

- The New Mexico Cooperatives are comprised of a group of four cooperatives located in Eastern New Mexico. Central Valley Electric Cooperative, Farmers' Electric Cooperative, Lea County Electric Cooperative and Roosevelt County Electric Cooperative had an aggregate peak summer demand of approximately 420 MW with an annual aggregate load factor of approximately 65% in 2008.
- The New Mexico Cooperatives full requirements wholesale power contract with Southwestern Power Service Company (SPS) is scheduled to ramp down starting June 1, 2012;
- The group of four cooperatives is requesting proposals to serve all or a portion of their needs from June 1, 2012 through May 31, 2022.

New Mexico Electric Cooperatives

- 004 – Central Valley Electric Cooperative***
- 008 – Roosevelt County Electric Cooperative***
- 009 – Farmers' Electric Cooperative***
- 023 – Lea County Electric Cooperative***



Request for Proposals:

- **Time Period A:** June 1, 2012 – May 31, 2017 - The New Mexico Cooperatives are requesting proposals for the following MW amounts in each hour:

MW per Hour	Jan	Feb	Mar	Apr	May	Jun	Jul	Aug	Sep	Oct	Nov	Dec
Off Peak (MW) (Not On Peak and NERC Holidays)	57	57	57	66	62	69	78	68	62	56	54	59
On Peak Jan-May and Sept-Dec = 5 x 16 (MW)												
On Peak June-Aug = 5 x 8 (MW) (Hours 7-14)	56	58	64	62	68	59	60	71	59	56	63	54
On Peak June-Aug = 5 x 8 (MW) (Hours 15-22)						90	90	90				

- **Time Period B:** June 1, 2017 – May 31, 2022 - The New Mexico Cooperatives are requesting proposals for the following MW amounts in each hour:

MW per Hour	Jan	Feb	Mar	Apr	May	Jun	Jul	Aug	Sep	Oct	Nov	Dec
Off Peak (MW) (Not On Peak and NERC Holidays)	89	88	88	102	96	107	121	106	97	87	84	92
On Peak Jan-May and Sept-Dec = 5 x 16 (MW)												
On Peak June- Aug = 5 x 8 (MW) (Hours 7-14)	87	89	99	97	106	72	74	90	92	87	98	84
On Peak June- Aug = 5 x 8 (MW) (Hours 15-22)						160	160	160				

Proposal Considerations:

- Proposals will be accepted for individual Time Periods (A or B) or a combination of Time Periods (A and B).
- Proposals will be accepted for meeting a portion of the MW need in each time period.
- **Seeking any and all types of power supply proposals including, but not limited to, generation ownership interests, unit contingent power, slice of system, blocks of power, renewable resources, conservation, load management, and other demand-side management programs/proposals.**
- Proposals to be priced based on markets of February 17, 2010.

Schedule:

Request for Proposal Release Date	January 15, 2010
Notice of Intent to Respond Date	January 28, 2010
RFP Response Date	February 25, 2010 (e-mail proposals preferred)
Short List Decision Date / Negotiations Begin	March 2010
Supplier Selection	April 2010
Contract Effective Date	June 1, 2012

- Other Activities / Key Dates / Milestones:
 - Confidentiality Agreements executed (two weeks)
 - Data to potential suppliers (upon execution of CA):
 - Analyze proposals/discussions with potential suppliers (March 2010)
 - Negotiate contract terms and conditions with finalists (March/April 2010)
 - Post-Supplier Selection:
 - Obtain appropriate approvals (if necessary, approximately 60 days)
 - Implementation of systems and communications (45-60 days)
 - Commence new contract – June 1, 2012

Bid Evaluation Fee:

- With each proposal submitted, all bidders are required to pay to the New Mexico Cooperatives a bid evaluation fee in the amount of \$5,000. A proposal may include one or both time periods; however, a single structure shall be considered a single proposal.
- The bid evaluation fee will be used to compensate the cooperatives for expenses incurred in evaluating the bids. For the purposes of clarification, if the cooperatives deem a bidder's proposal to be multiple proposals, the cooperatives will notify the bidder and allow it to elect to pay the incremental bid fee or to revise its proposal to comply with the cooperatives requirements for a single proposal. Bidders are reminded that as mentioned previously, bidders may offer the two time periods (A and B) for a single bid fee.
- Checks should be made out to:
Eastern New Mexico Generators, LLC, P.O. Drawer 1447
Lovington, New Mexico 88260
Attention: Mike Faris
- Checks must be mailed to the above address when bid is submitted. For bids which are qualified (i.e., fulfill proposal requirements listed below), bid evaluation fees shall be non-refundable. For bids which do not qualify, the bid evaluation fees will be returned. Bidders wishing to provide bid fees by wire transfer should contact the RFP Project Manager for wiring instructions.

Proposal Requirements / Additional Information:

- Proposal Description – must identify all services included in pricing proposal (including a plan for transmission and congestion); must identify all services not included in pricing (if applicable).
- Quantities and Pricing.
- Proposals including non-dispatchable generating resources must include the cost of providing a forecast of the output of the resource on a day ahead basis.
- Evidence that Respondent is capable of providing the requested service and has the requisite financial resources to provide such services over the period of the contract. Respondent is requested to provide any available credit ratings, as well as audited financial statements.
- All Respondents have the obligation and responsibility to clearly mark and identify any and all proprietary information that is included in the Response which the Respondent does not want disclosed to the public or to be utilized by the New Mexico Cooperatives or their consultants for purposes other than the evaluation of any submitted proposals. The New Mexico Cooperatives and their consultants are not restricted from using or disclosing any data that is already obtainable from another public source, without restriction. The New Mexico Cooperatives and their legal and technical consultants will use their best efforts to maintain the confidentiality of any submitted proprietary information; however, should such information be accidentally disclosed, Respondents agree that New Mexico Cooperatives and their legal and technical consultants shall not be liable for such accidental disclosure.
- This RFP is not an offer or a contract. The New Mexico Cooperatives and/or EnerVision, Inc. reserve the right to accept or reject any or all proposals and are not obligated to contract for any of the products/services described in this RFP. The New Mexico Cooperatives are under no obligation to accept any proposal, nor are the New Mexico Cooperatives obligated to accept the lowest cost proposal, as there are many other factors which will be considered in the review and analysis of the proposals. The New Mexico Cooperatives may in their sole option determine to revise this RFP at any time. All Respondents, by submitting a proposal, agree that they will not seek any legal recourse against the New Mexico Cooperatives for their rejection of their respective proposal, or for any other matter related to the New Mexico Cooperative's actions or inactions on the proposal.

- Contact information:
 - **Address RFP questions, confidentiality agreements, proposals to:**
 - Carter Babbit, Principal Consultant, EnerVision, Inc.
 - carter.babbit@enervision-inc.com
 - 678-510-2917 office; 404-216-3863 mobile
 - Legal contact:
 - Eli Eilbott
 - EDE@dwgp.com
 - 202-467-6370 - office

- Responses to FAQs to be posted on EnerVision's website (www.enervision-inc.com)